

4200 Series electric strikes for cylindrical locks

Overview

The 4200 Series electric strikes are easy to order, configure in the field and install. This makes it a great choice for commercial applications where traffic control is the primary function.

Compatible with a wide range of cylindrical devices, the 4200 series makes electrifying an opening simple. It is designed and tested to work with all Schlage and Falcon cylindrical locks as well as those of many other manufacturers.

With a variety of field configurable options, the 4200 series is able to address a broad range of needs. The power failure mode (fail safe or fail secure) can be changed in the field without disassembling the strike. The 4200 series also features a 12/24 dual-voltage solenoid for field wiring of either input voltage.

Additional factory orderable options provide even greater flexibility. The 4200 series can be ordered with or without latchbolt monitor. Square face plate is offered standard to accommodate hollow metal frames, and rounded corner faceplates are available as an option for aluminum frames. An entry buzzer and rectifier kits are also available options.

The 4200 was developed with Von Duprin's high standards and engineering expertise. Its heavy duty stainless steel construction is designed to withstand abuse.

Features and benefits

- Field configurable 12/24 voltage utilizing dual-voltage internal solenoid
- Field configurable power failure mode (fail-safe/fail-secure)
- Non-handed, internal solenoid design
- Heavy duty stainless steel faceplate
- Latchbolt monitoring standard on 4212 only
- Optional entry buzzer and rectifier kits available for AC to DC operation
- 1 year electrical product warranty

Lockset compatibility

The 4200 series is compatible with all Schlage and Falcon cylindrical locks as well as cylindrical and deadlatch locks of many other manufacturers.

- The 4211 is compatible with locksets with $\frac{5}{8}$ " (15 mm) throw latchbolts, or up to $\frac{3}{4}$ " (19mm) throw latchbolts with a $\frac{1}{8}$ " door gap.
- The 4212 is compatible with locksets with $\frac{1}{2}$ " (12.7mm) throw latchbolts, or up to $\frac{5}{8}$ " (15 mm) throw latchbolts with a $\frac{1}{8}$ " door gap.



4200 Series power requirements

Model	Voltage	Current	Duty	Amps
4211 or 4212	12V	DC	Continuous	0.20
4211 or 4212	24V	DC	Continuous	0.10

4212 Latchbolt monitor switch rating: 30VDC at 0.20 A

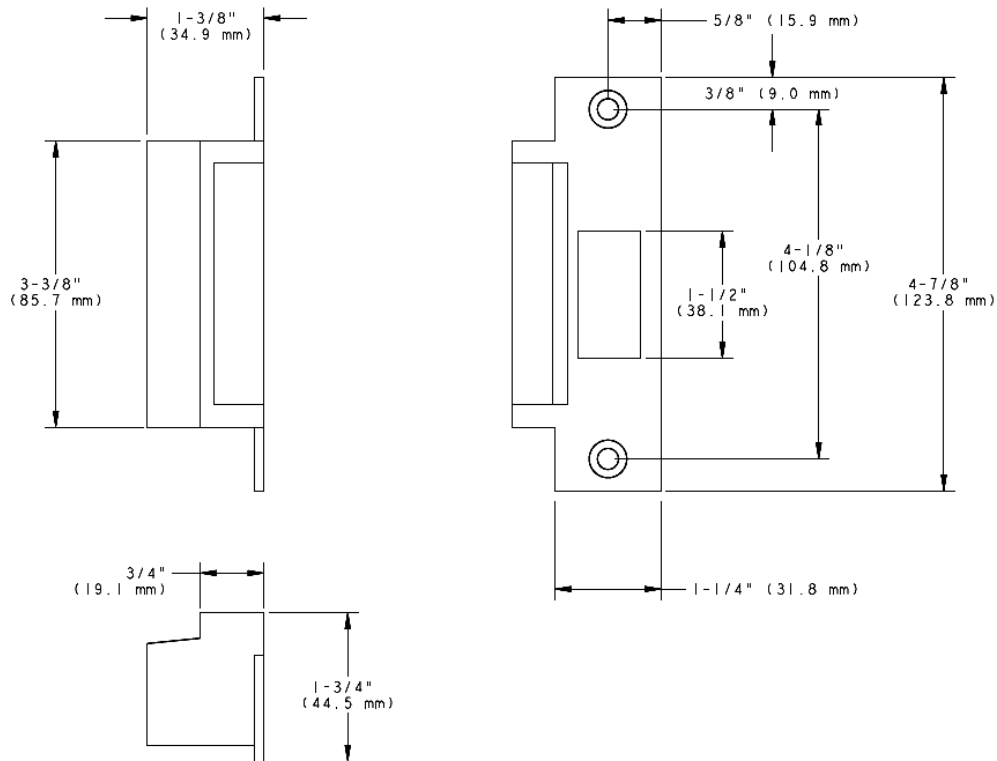
The 4200 series requires a DC regulated power supply, and the Schlage PS900 series power supplies are recommended.

Continuous duty=Energized 1 minute or more

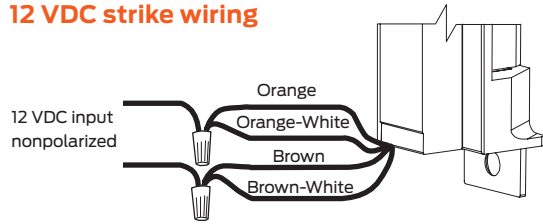
Model specifications

Model number	4211	4212
Retrofits model	HES 5200, RCI 6 Series	HES 5000, RCI 6 Series
Latchbolt throw	$\frac{3}{4}$ "	$\frac{5}{8}$ "
Latchbolt monitor switch		•
Face plate length	4 $\frac{7}{8}$ "	4 $\frac{7}{8}$ "
Backbox depth	1 $\frac{3}{8}$ "	1 $\frac{3}{8}$ "
Finish (faceplate)	BHMA 630/US32D	
Lockset	Cylindrical	•
	Deadlatch	•
	Mortise	
Number of doors	Single	•
	Pair	
Frame type	Hollow metal	•
	Aluminum	•
	Wood	
Options	EB (entry buzzer - fail-secure only)	•
	SO12 & SO24 rectifier kit for AC to DC operation	•

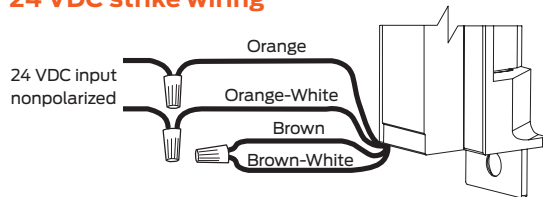
4200 Series electric strikes dimensions



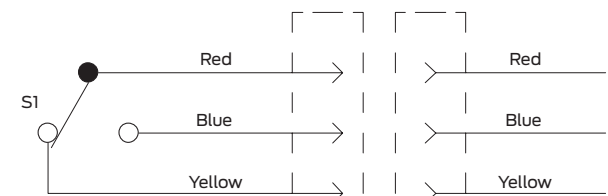
12 VDC strike wiring



24 VDC strike wiring



Latchbolt monitoring switch (4212 only)



Switch shown with latch status tripper depressed

Ordering information

4200 - S024 - EB

Model	Rectifier kit*	Buzzer*
1	2	3

* Optional

Selections correspond with the numbers above

1	Model
4211	See model specification chart to make the proper selection
4212	See model specification chart to make the proper selection
2	Rectifier kit (optional)
S012	Converts 12 VAC voltage to 12 VDC to operate the solenoid
S024	Converts 24 VAC voltage to 24 VDC to operate the solenoid
3	Buzzer (optional)
EB	Entry Buzzer, with fail-secure (FSE) configured

Standard features

- Power failure mode: Field configurable fail-secure/ fail-safe
- Voltage: Field configurable 12 VDC/24 VDC dual voltage solenoid
- Finish: 630 satin stainless steel

5100 Series electric strikes for cylindrical locksets

Overview

The Von Duprin 5100 electric strike has been designed to offer flexibility and convenience for locksmiths and security professionals. This easy-to-install electric strike was created for medium-duty applications, specifically to control traffic flow through interior and exterior openings in retail and commercial environments.

The 5100 electric strike is compatible with a wide range of cylindrical devices and is extremely versatile for field conversions. The combination of three faceplate options plus field selectable voltage and power fail modes allows it to be changed on the job site to create as many as 12 different configurations. An adjustable keeper also improves fit for applications with weather stripping or tight door preps. In short, the 5100 provides added convenience by ensuring the right parts are in the box to get the job done.

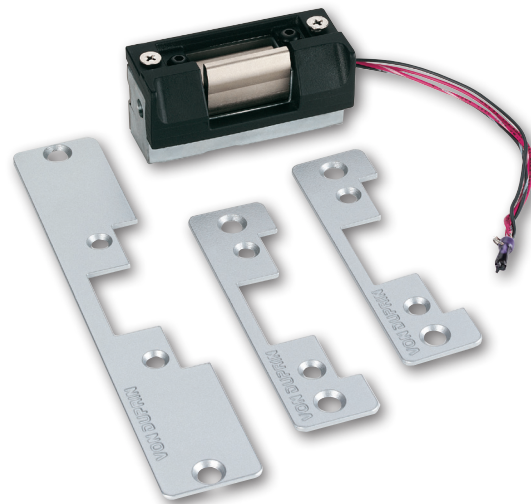
The 5100 was developed with Von Duprin's high standards and engineering expertise. Its heavy-duty construction and tamper-resistant design is able to withstand abuse. The 5100 is tested to over one million cycles and provides 1300 lbs holding strength.

Features and benefits

- Designed for cylindrical applications
- Capable of 12 in-field configurations
- Three faceplates standard in every box
- Field selectable 12/24 voltage
- Non-handed. Internal solenoid design
- Field selectable power failure mode (fail-safe/fail-secure)
- Adjustable keeper
- Rectifier kits
- Available in three finishes
- Suitable for interior and exterior doors
- UL 1034 listed for burglary-resistant electric door strikes
- Static strength 1300 lbs
- Dynamic strength 70 ft-lbs
- Endurance 1,000,000 cycles

Lockset compatibility

Keeper depth of $\frac{1}{2}$ " is sufficient to accommodate all cylindrical locks up to $\frac{5}{8}$ " throw and most aluminum narrow stile deadlatches.



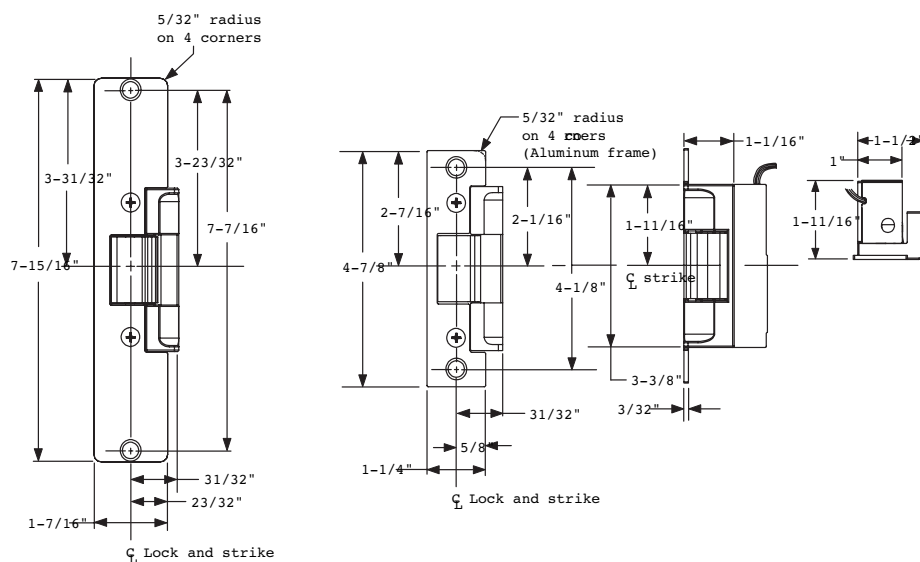
5100 Series power requirements

Power options		
DC: Regulated power supplies (recommended)	PS902 power supply	
AD/DC: Conversion	Von Duprin SO-24 kit	
	12VDC	24VDC
Resistance (ohms)	32	128
Current (amps)	0.38	0.19
All specs $\pm 10\%$ @ 77°F/25°C		

Model specifications

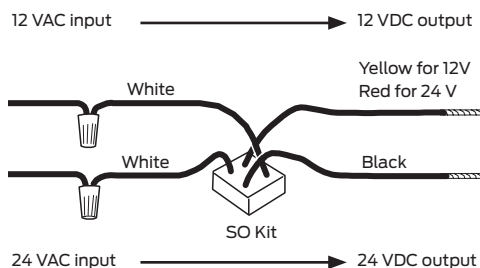
Model #	5100
Latchbolt throw	$\frac{1}{2}$ " to $\frac{5}{8}$ " ($\frac{1}{2}$ " keeper depth)
Face plate length	$4\frac{7}{8}$ " or $7\frac{15}{16}$ "
Depth	$1\frac{1}{16}$ "
Lockset	Cylindrical and deadlatch
Door/frame type	Hollow metal, aluminum and wood
Number of doors	Single
Certifications	UL 1034 burglary listing
Application notes	Versatile electric strike for aftermarket, covering multiple applications in one SKU.

5100 Series electric strikes dimensions

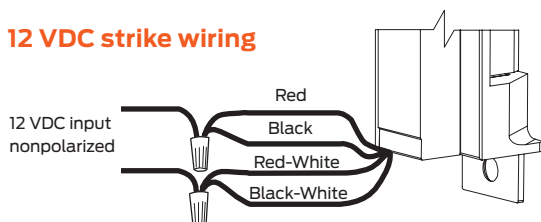


Solenoid power requirements; 12VDC, 0.38 A, 24 VDC, 0.19 A

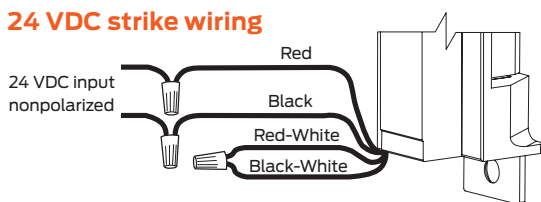
For DC operation, Von Duprin PS902 series power supply is recommended.
For AC operation, Von Duprin SO12 (12VAC) or SO24 (24VAC) kit is recommended.



12 VDC strike wiring



24 VDC strike wiring



Ordering information

5100 - US219 - S024

Model	Finish	Rectifier kit*
1	2	3

Selections correspond with the numbers above

1	Model
5100	Electric strike for cylindrical locksets
2	Finish
	US SP28/BHMA 698 Aluminum
	US I9/BHMA 622 Flat black
	US SP313/BHMA 695 Dark brown
3	Rectifier kit (optional)
S012	Converts 12 VAC voltage to 12 VDC to operate the solenoid
S024	Converts 24 VAC voltage to 24 VDC to operate the solenoid

Standard features

- 24 volts DC
- Fail-secure
- Field convertible to fail-safe